

the OUTLOOK study

Experiences of LGBTQ Newcomers in Waterloo Region



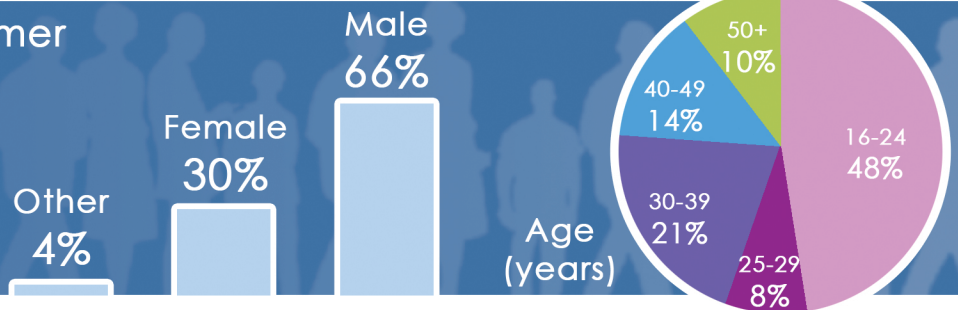
For this fact sheet, OutLook worked in collaboration with the Solidarity Alliance, a Rainbow Community Council working group. Solidarity Alliance is an innovative partnership between local agencies committed to increasing safe access to services for LGBTQ immigrants and refugees in Waterloo Region.

Outlook explores the well-being of the LGBTQ communities in Waterloo Region, Ontario, Canada. A coalition of community, academic and public health stakeholders came together with the Waterloo Region Rainbow Community Council (RCC) with the aim of creating change for LGBTQ individuals locally.

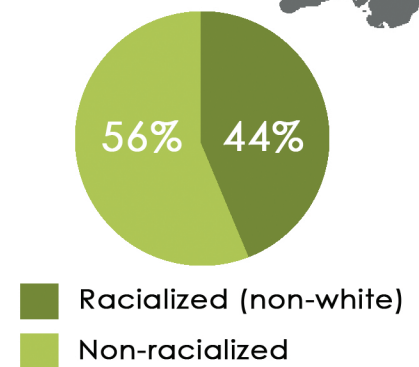
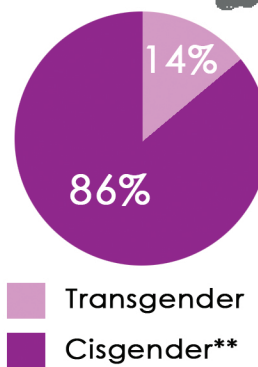
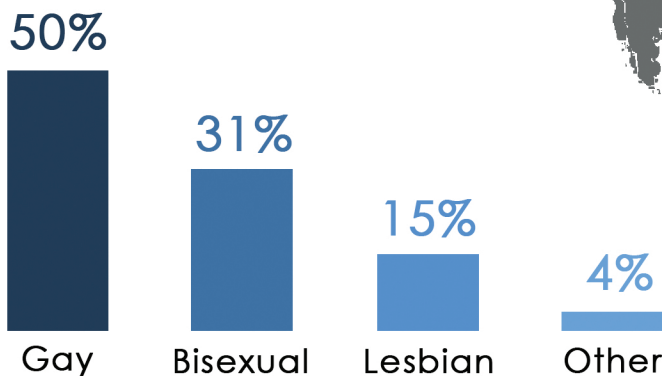
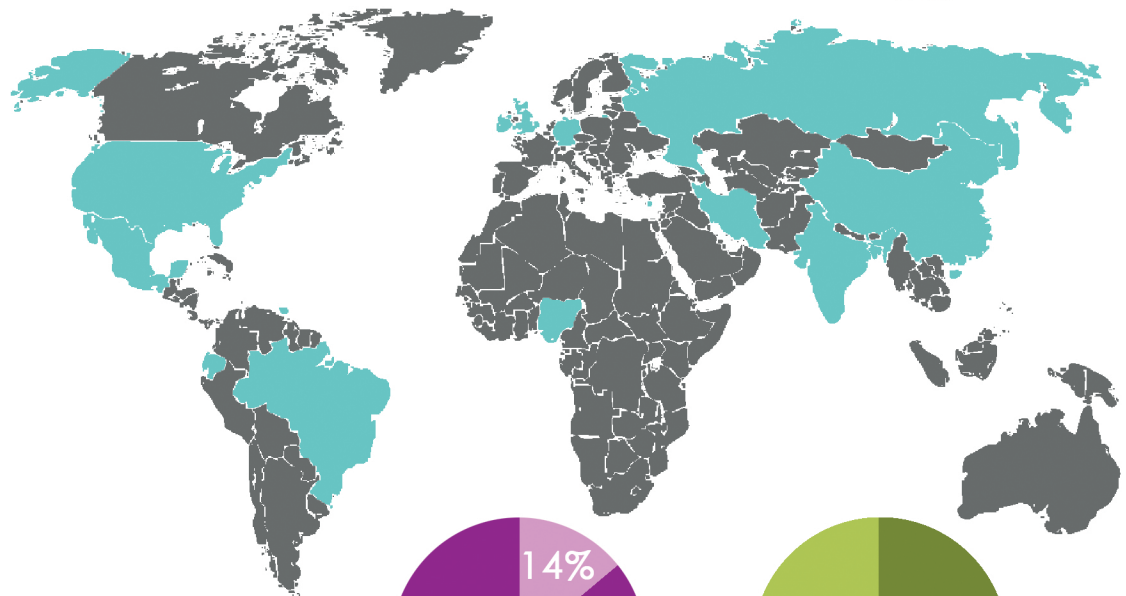
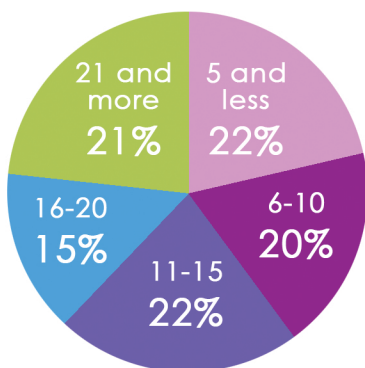
WHO WE SURVEYED

Of 526 LGBTQ people in the study, 73 were newcomers from 18 different countries. We present information about their demographics and experiences, highlighting differences between racialized and non-racialized newcomers. In some cases, we also include information about Canadian-born participants, for comparison purposes.

In this fact sheet, newcomer is defined as being born outside of Canada, in line with the definition used by the Solidarity Alliance.*



Years in Canada



* The term newcomer is typically defined as people who have migrated to the country within the last five years. However, in this fact sheet a more broad definition is used (i.e. no maximum number of years in Canada), to align with the inclusive definition that guides the work of the Solidarity Alliance.

** Cisgender = people who identify with their sex assigned at birth. Also referred to as non-transgender

SOCIAL INCLUSION

OUTLOOK



Non-racialized newcomers



Racialized newcomers

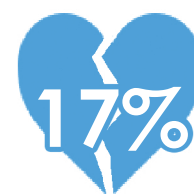
Have supportive parents



Non-racialized newcomers

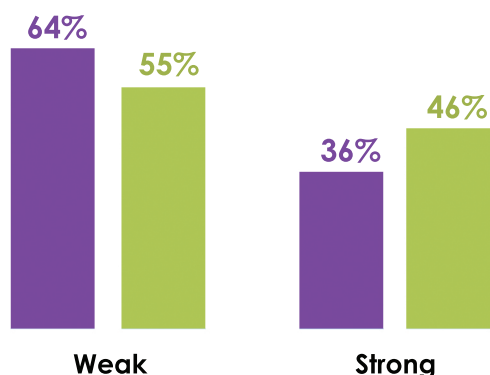


Racialized newcomers



Canadian-born respondents

Feel that being LGBTQ has hurt their family



Connection to local community

■ Racialized
■ Non-racialized



Non-racialized newcomers

Racialized newcomers

Feel they frequently had to pass as straight

25%

Racialized newcomers involved in ethnic or cultural associations. None are LGBTQ specific organizations.

HOW NEWCOMERS CONNECT WITH LGBTQ PEOPLE



70%



Facebook

58%



Location based apps

32%

LGBTQ NEWCOMERS ARE LIKELY TO ATTEND



Pride events

40%



LGBTQ safe community centre

16%



LGBTQ support group

13%

ACCESS TO HEALTHCARE AND MENTAL HEALTH SERVICES

Who has a primary care provider?



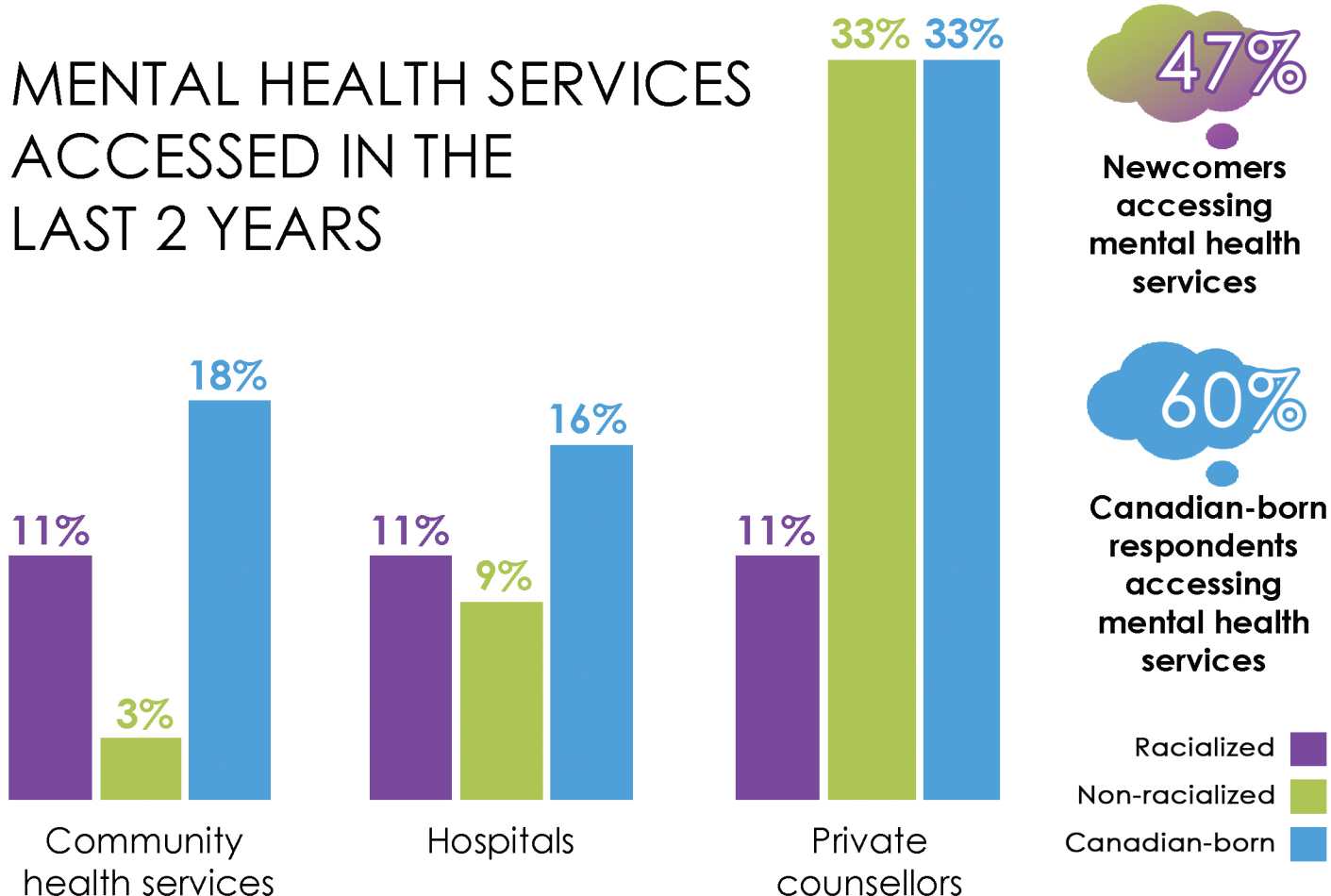
Racialized newcomers are less likely to have a primary care provider.

Who has come out to their healthcare provider?



Only **11% of racialized** and **31% of non-racialized LGBTQ newcomers** talk to their regular healthcare provider about health issues specific to sexual orientation.

MENTAL HEALTH SERVICES ACCESSED IN THE LAST 2 YEARS



the OUTLOOK study

WILFRID LAURIER UNIVERSITY



Laurier Centre for
Community, Research,
Learning and Action



RCC
RAINBOW COMMUNITY COUNCIL



Region of Waterloo

PUBLIC HEALTH AND
EMERGENCY SERVICES



OHTN

*Promoting excellence and innovation
in HIV research and care*

Suggested Citation:

Boles, R., Khalil, C., Mulholland, A., Ragonetti, T., LeFort, V., Davis, C., Coulombe, S., Coleman, T., Travers, R., Wilson, C., & the OutLook Study Team (2018). *Experiences of LGBTQ Newcomers in Waterloo Region*. Wilfrid Laurier University, Waterloo, Ontario. pp. 1-5.

Acknowledgements:

This project was supported by a grant from The Ontario HIV Treatment Network.

We would like to thank the 526 LGBTQ individuals in Waterloo Region who gave their time to complete our survey.

The OutLook Study Team Includes:

Grace Bermingham (ROWPHE)
Colin Boucher (ACCKWA)
Ruth Cameron (ACCKWA)
Todd Coleman (WLU)
Simon Coulombe (WLU)
Charlie Davis (WLU)
Victor LeFort (ACCKWA)
Eve Nadler (ROWPHE)
Jeremy Steffler (RCC)
Robb Travers (WLU)
Sue Weare (CCRLA)
Ciann Wilson (WLU)
Michael Woodford (WLU)