

# the OUTLOOK study

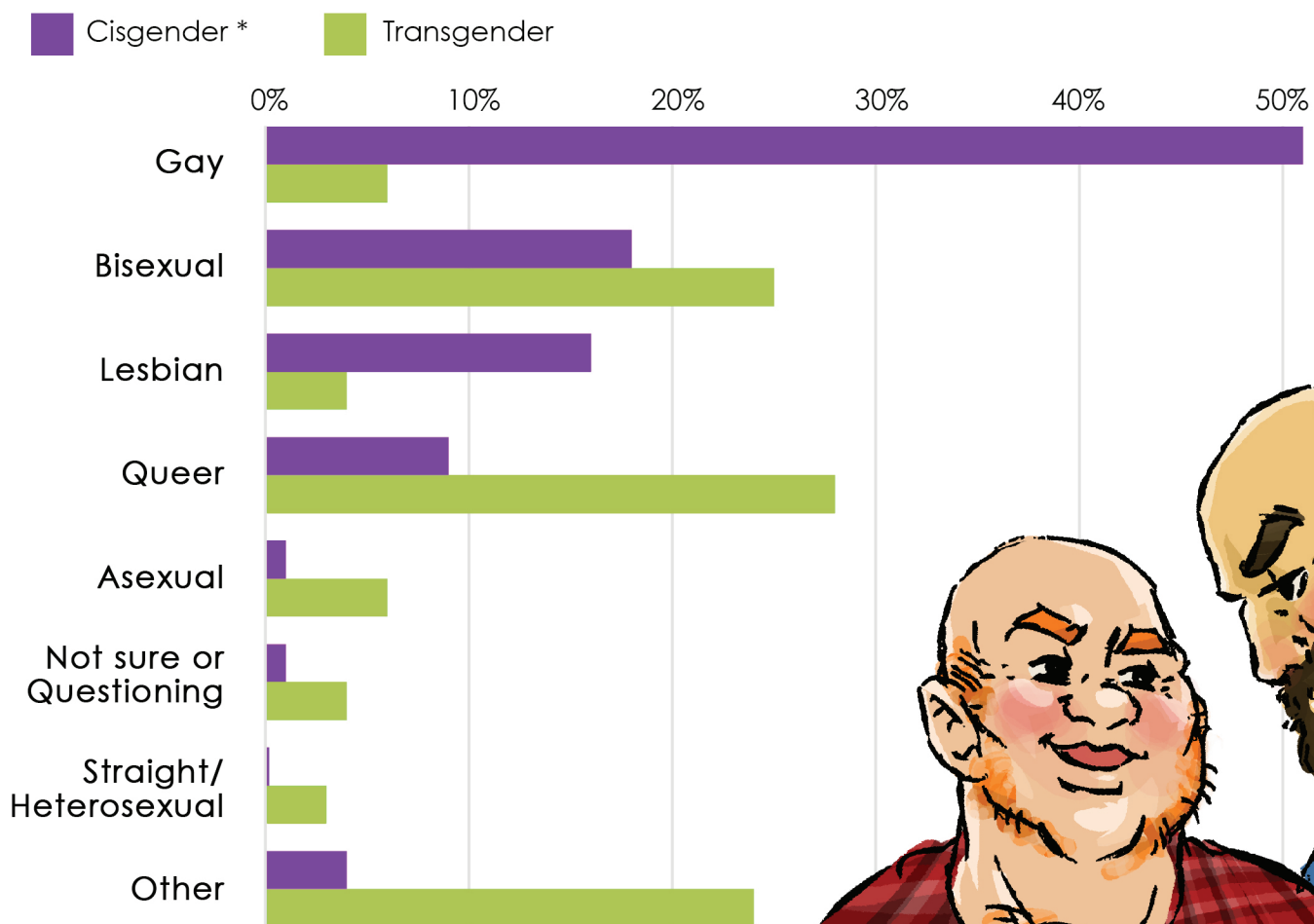
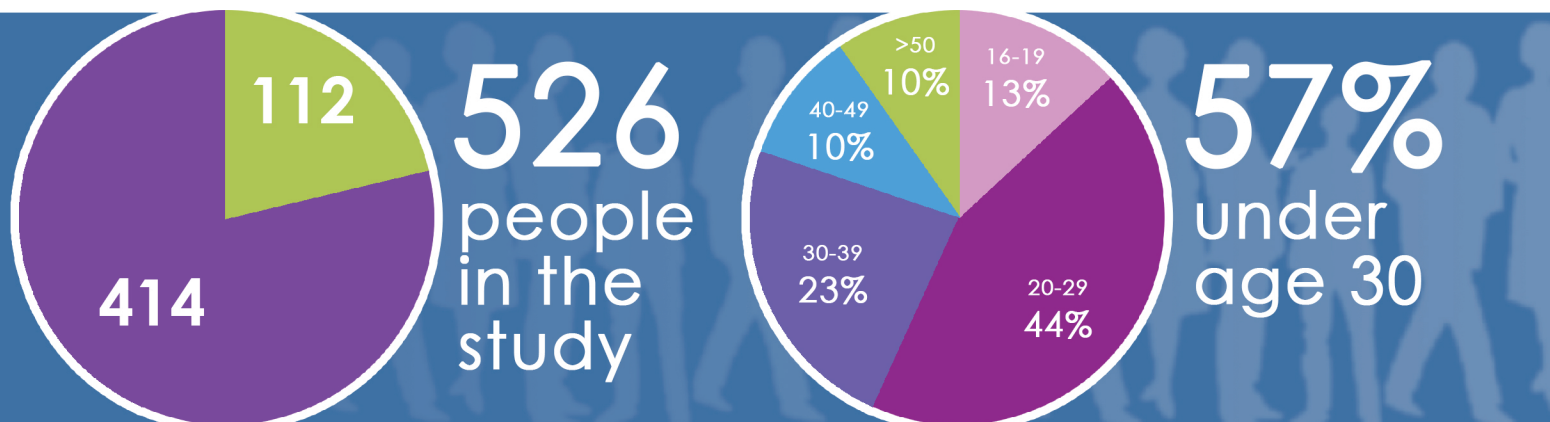
## Victimization and Community Safety among LGBTQ People in Waterloo Region



For this fact sheet, Outlook worked in collaboration with Breaking the Silence, a Rainbow Community Council (RCC) working group concerned with hate crimes, violence and feelings of safety experienced by Waterloo Region's LGBTQ community members. We hope that our fact sheets are helpful in your work to create change.

**OutLook** explores the well-being of the LGBTQ communities in Waterloo Region, Ontario, Canada. A coalition of community, academic and public health stakeholders came together with the Waterloo Region Rainbow Community Council (RCC) with the aim of creating change for LGBTQ individuals locally.

# WHO WE SURVEYED



\*Cisgender refers to people who identify with the sex assigned to them at birth. Also referred to as non-transgender.

# VICTIMIZATION

OUTLOOK

**Over 90%**  
said growing up  
they heard that  
people who are  
lesbian, gay,  
bisexual or trans  
were abnormal.

**73%**

were made fun of,  
or called names,  
because of  
gender identity

**26%**

were hit or  
beaten up  
because of their  
gender identity

**71%**

were made fun of,  
or called names,  
because of  
sexual orientation

**10%**

were hit or  
beaten up  
because of their  
sexual orientation

**42%**

had to move away from  
their family or friends  
because of their  
**GENDER IDENTITY**

**86%**

of trans respondents  
have tried to pass  
as non-trans

**30%**

had to move away from  
their family or friends  
because of their  
**SEXUAL ORIENTATION**

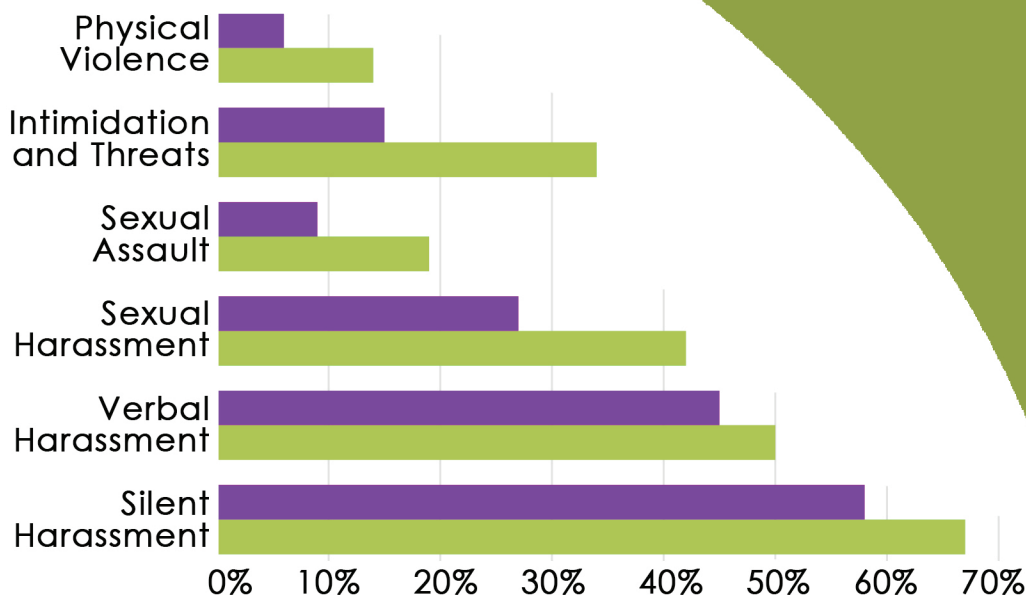
**92%**

of respondents  
have pretended  
to be heterosexual

Transgender  
Cisgender

## TRANS PEOPLE FACE GREATER CHALLENGES

### EXPERIENCES



**65%** have been  
objectified  
or fetishized

**59%** worry  
about growing  
old alone

**73%** fear  
they will  
die young

# PLACES PEOPLE AVOID

Trans people fear harassment in **malls/clothing stores (38%)** and **at the gym (38%)**



Cisgender people fear harassment in **clubs or social clubs (18%)** and **at the gym (15%)**



**25%**  
cisgender  
people avoid  
**places  
of worship**



**57%**  
transgender  
people avoid  
**public  
washrooms**

**OUTLOOK**

# PLACES WHERE PEOPLE FEEL SAFE

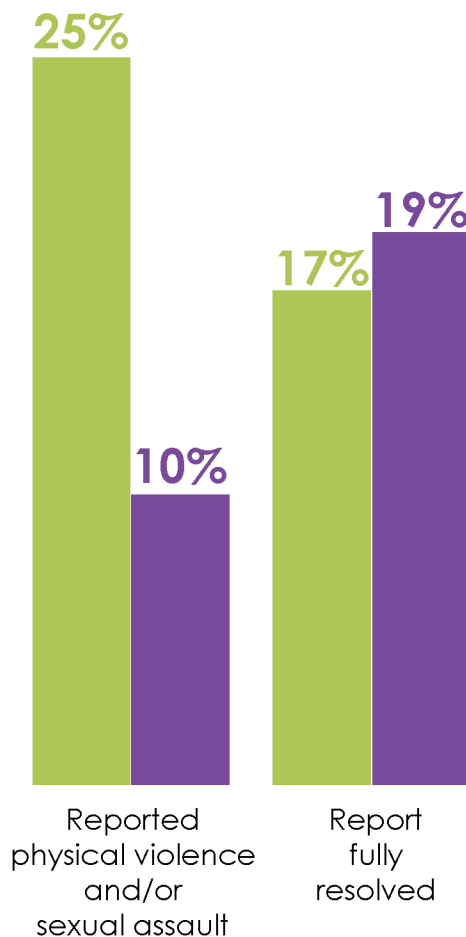
**64%** cisgender  
**57%** transgender  
feel safe in  
**LIBRARIES**



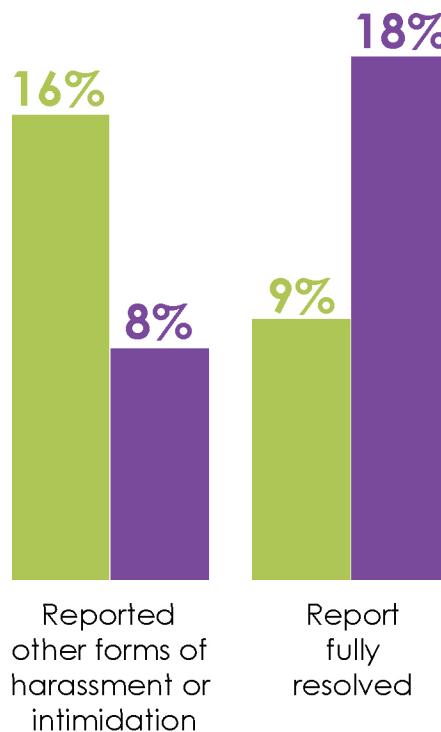
Trans people feel safe on  
**social media/online spaces (40%)**  
and in **public spaces (37%)**



Cisgender people feel safe in  
**grocery stores/pharmacies (59%)**  
and in **malls/clothing stores (59%)**



Transgender Cisgender



**21%**  
report  
experiencing  
some form of  
**police  
harassment**  
because of their  
**gender identity**

**16%**  
report  
experiencing  
some form of  
**police  
harassment**  
because of their  
**sexual  
orientation**



# COMMUNITY

OUTLOOK

**61%** cisgender  
**77%** transgender  
feel it is important to be a  
member of an LGBTQ  
organization

Over 90%  
say there is a need  
for LGBTQ friendly  
spaces to socialize  
in Waterloo Region

**42%** cisgender  
**31%** transgender  
report strong sense of  
community  
belongingness

Likely to attend LGBTQ support group



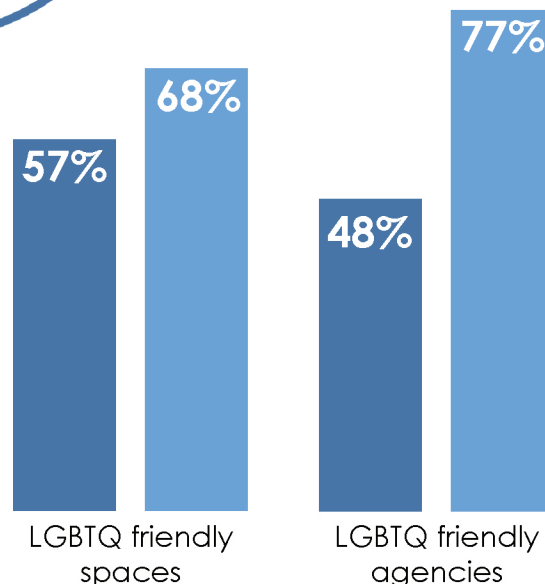
Likely to attend LGBTQ-safe community centre



Likely to attend Pride events



Transgender Cisgender



Access these spaces Aware of these spaces

## HOW LGBTQ PEOPLE CONNECT



**62%** cisgender  
**72%** transgender

## FACE TO FACE

**73%** cisgender  
**79%** transgender



LGBTQ+  
organizations

**28%** cisgender  
**47%** transgender



Youtube  
videos

**20%** cisgender  
**35%** transgender



online  
dating

**35%** cisgender  
**25%** transgender



location  
based apps

**31%** cisgender  
**15%** transgender



LGBTQ  
bars

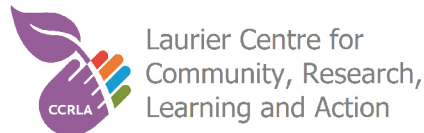
**26%** cisgender  
**26%** transgender



Twitter

**20%** cisgender  
**23%** transgender

# the OUTLOOK study



Region of Waterloo  
PUBLIC HEALTH AND  
EMERGENCY SERVICES



*Promoting excellence and innovation  
in HIV research and care*

## **Suggested citation:**

Luu, K., Ashtiani, S., Moyaert, T., Furman, E., Moorlig Silk, E., Travers, R., Coulombe, S., Davis, C., & the OutLook Study Team. (2017). *OutLook: Victimization and Community Safety among LGBTQ People in Waterloo Region*. Wilfrid Laurier University, Waterloo, Ontario. pp. 1-6.

## **Acknowledgements**

This project was supported by a grant from The Ontario HIV Treatment Network.

We would like to thank the 526 LGBTQ individuals in Waterloo Region who gave their time to complete our study.

## **The OutLook Study Team Includes:**

Grace Bermingham (RWPHEs)  
Colin Boucher (ACCKWA)  
Ruth Cameron (ACCKWA)  
Todd Coleman (WLU)  
Simon Coulombe (WLU)  
Charlie Davis (WLU)  
Chris Harold (RWPHEs)  
Victor LeFort (ACCKWA)  
Jeremy Steffler (RCC)  
Robb Travers (WLU)  
Sue Weare (CCRLA)  
Ciann Wilson (WLU)  
Michael Woodford (WLU)